

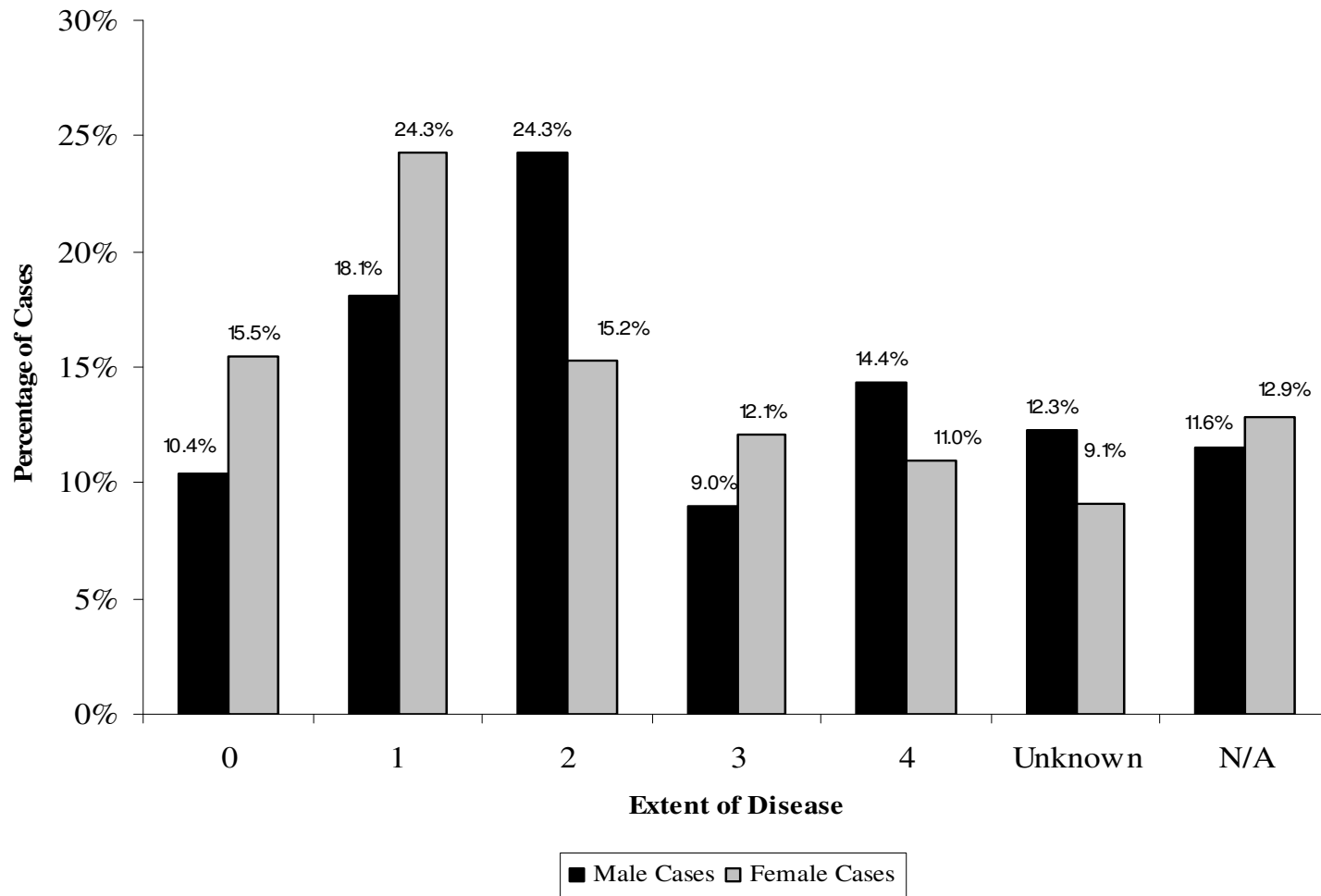
*St. Francis Cancer Registry*  
*Statistical Review*  
*2006*



BON SECOURS  
ST. FRANCIS HEALTH SYSTEM

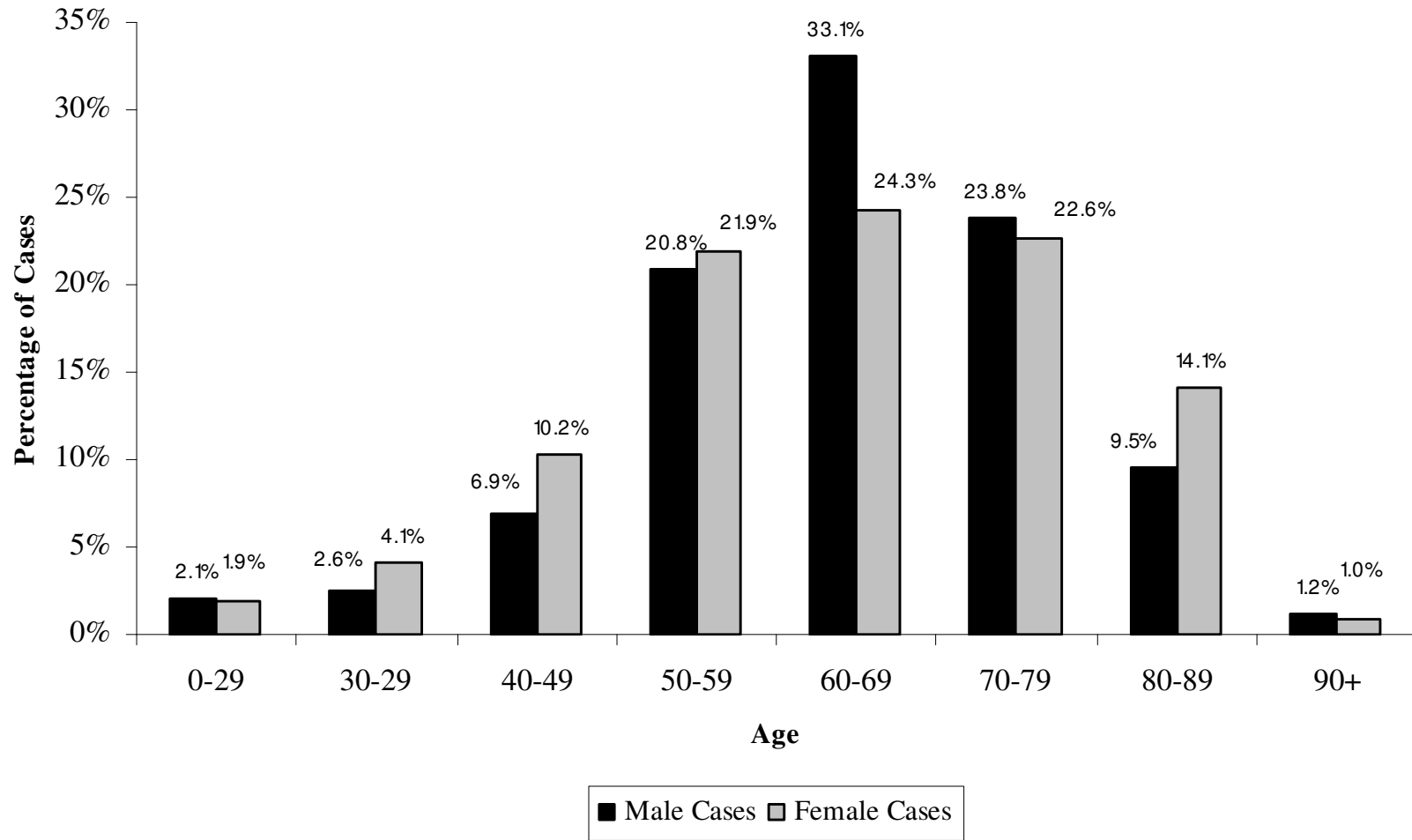
# *Distribution by AJCC Stage*

## *2006 Analytical Cases*



# *Age Grouping by Gender*

## *2006 Analytical Cases*



# *Incidence by Site*

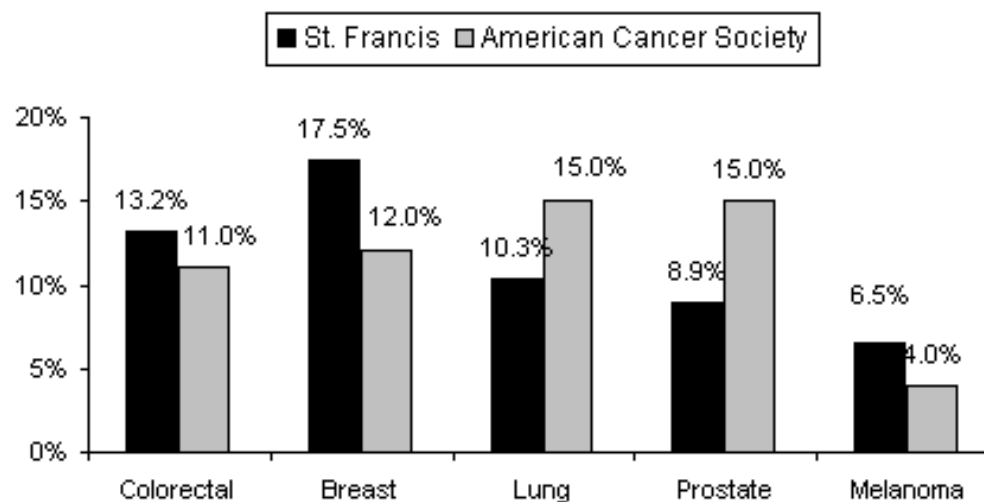
*Comparison of the frequency of cancer at St. Francis with the American Cancer Society (ACS) estimates for 2006 for the most frequently diagnosed cases.*

**St. Francis Total Cases: 971**

**St. Francis Analytical Cases: 855**

**ACS Estimate of New Cancer Cases in SC: 21,370**

**ACS Estimate of New Cancer Cases in US: 1,444,920**



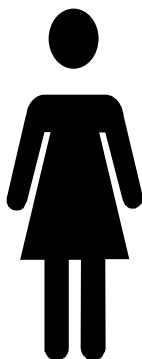
# Incidence by Sex

**St. Francis Male Analytical Cases: 432**  
**ACS National Estimate of New Cancer Cases**  
**in the US in Males: 766,860**

SITE	SF	ACS
Colorectal	13%	10%
Prostate	18%	29%
Lung	11%	15%
Melanoma	8%	4%
Bladder	9%	7%

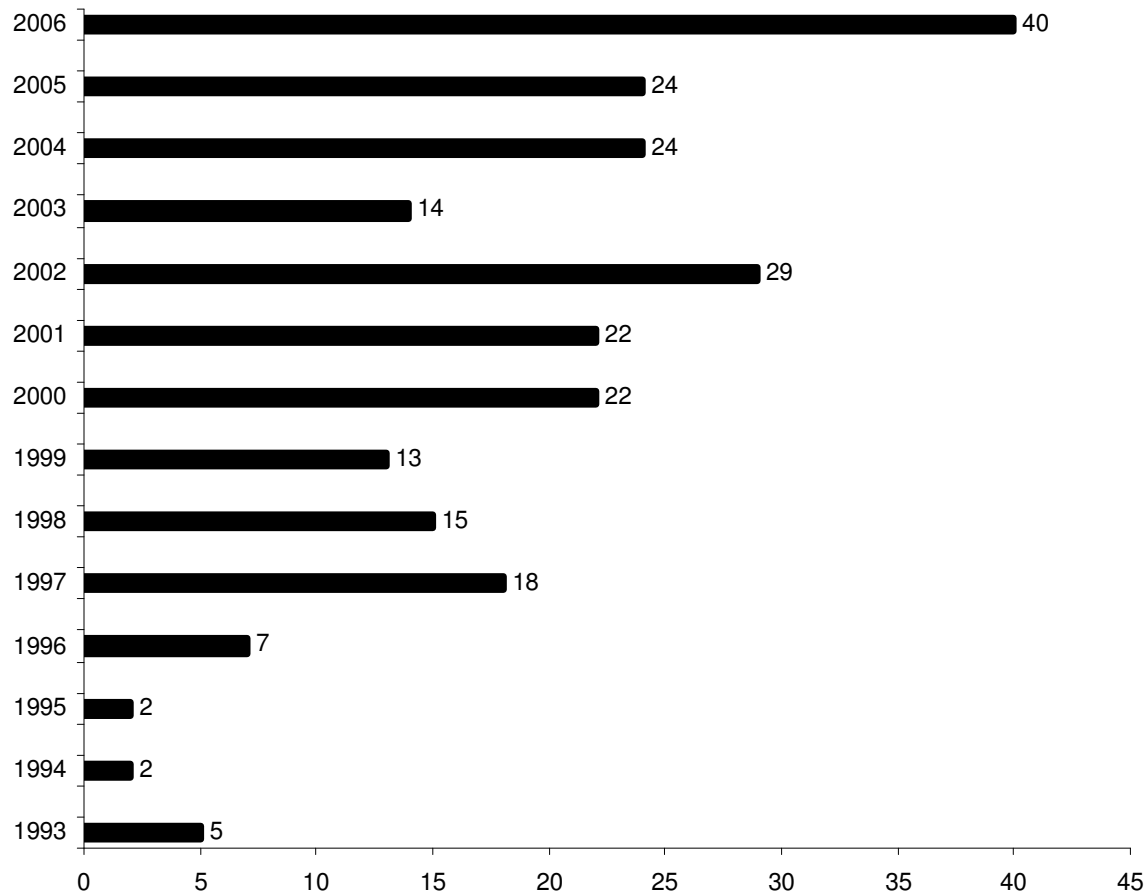


**St. Francis Female Analytical Cases: 420**  
**ACS National Estimate of New Cancer Cases**  
**in the US in Females: 678,060**

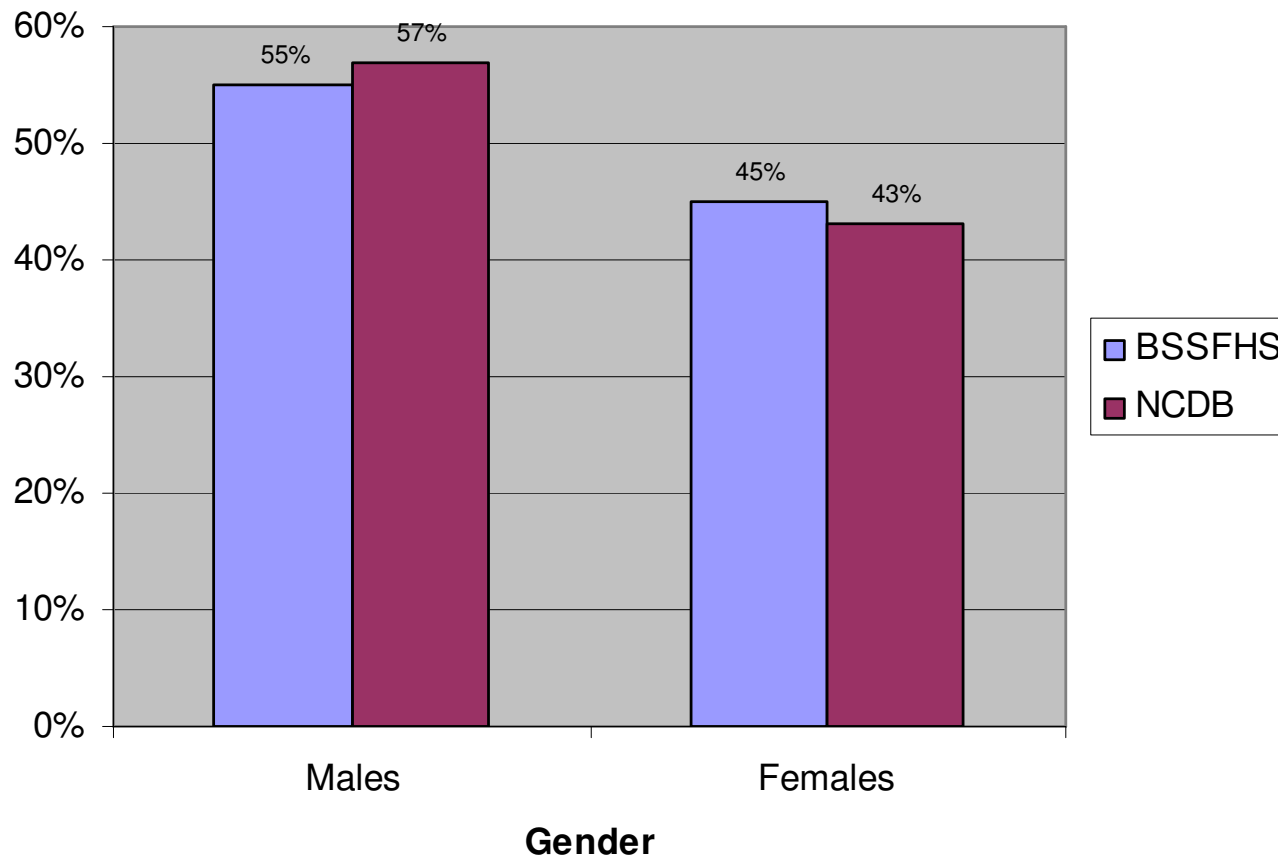


SITE	SF	ACS
Breast	35%	26%
Colorectal	14%	11%
Lung	9%	15%
Melanoma	5%	4%
Uterus	2%	6%

# *Number of St. Francis Registry Leukemia Cases by Year*



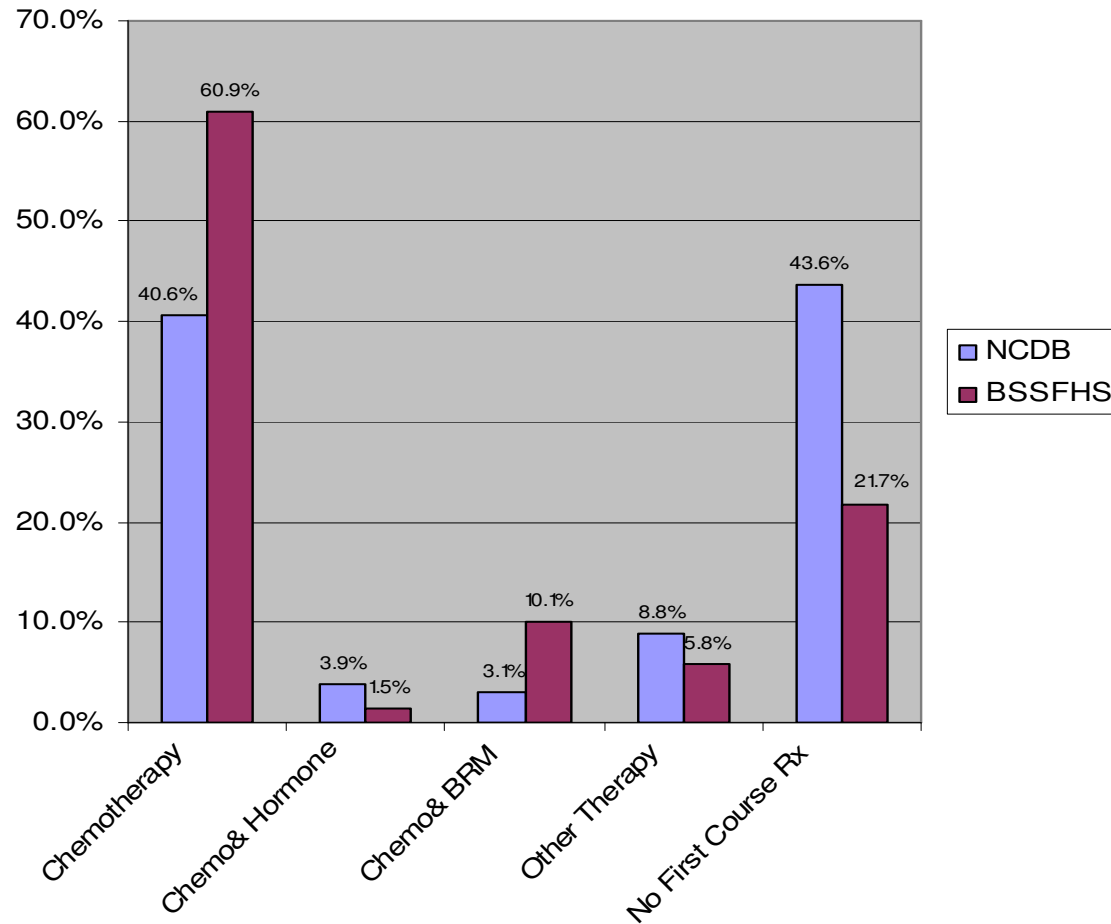
# *Gender of Leukemia Cancer Diagnosed 2000-2004*



BSSFHS = (St. Francis)

NCDB = (National Center Data Base)

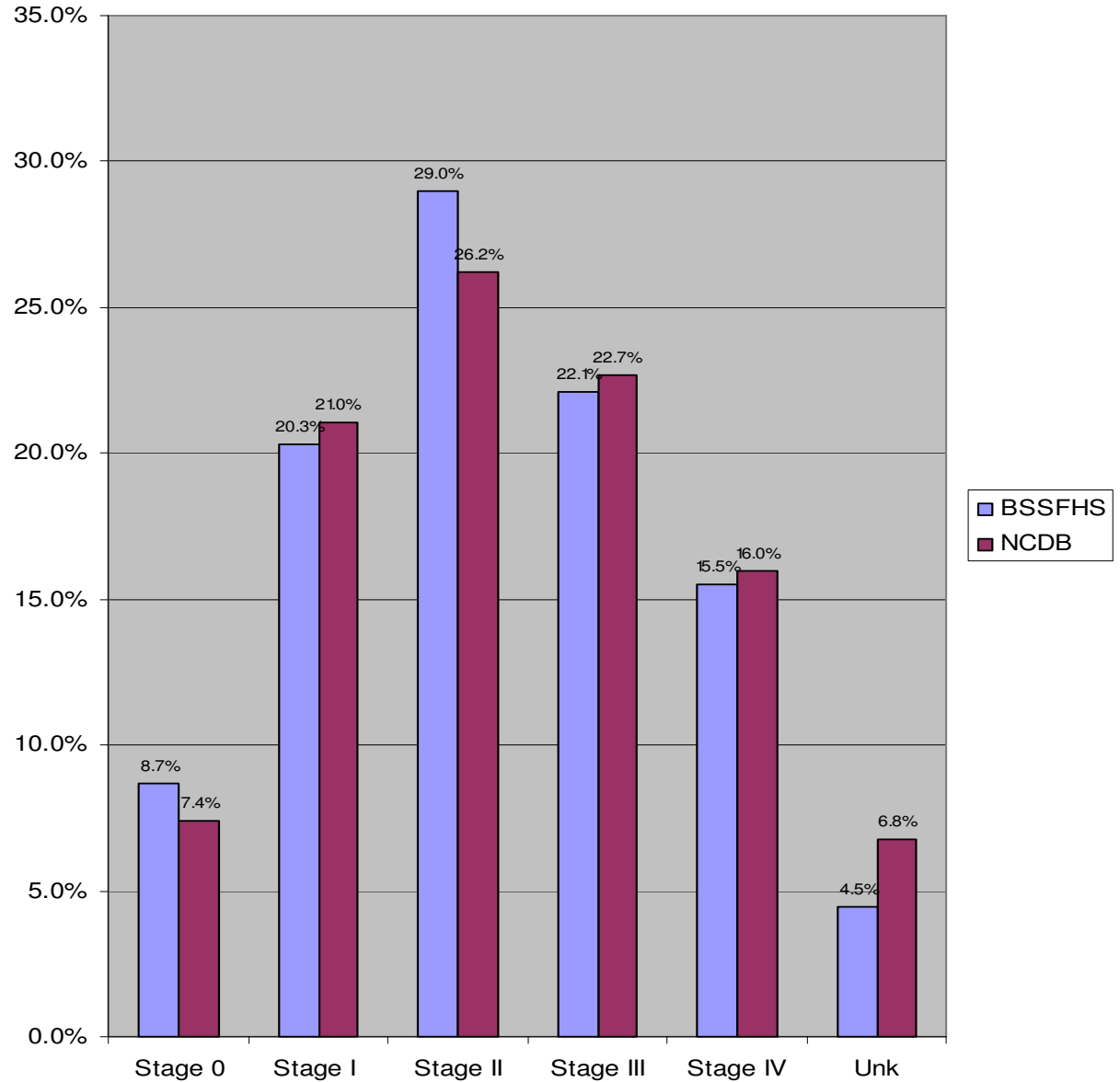
# Treatment of Leukemia Diagnosed 2000-2004



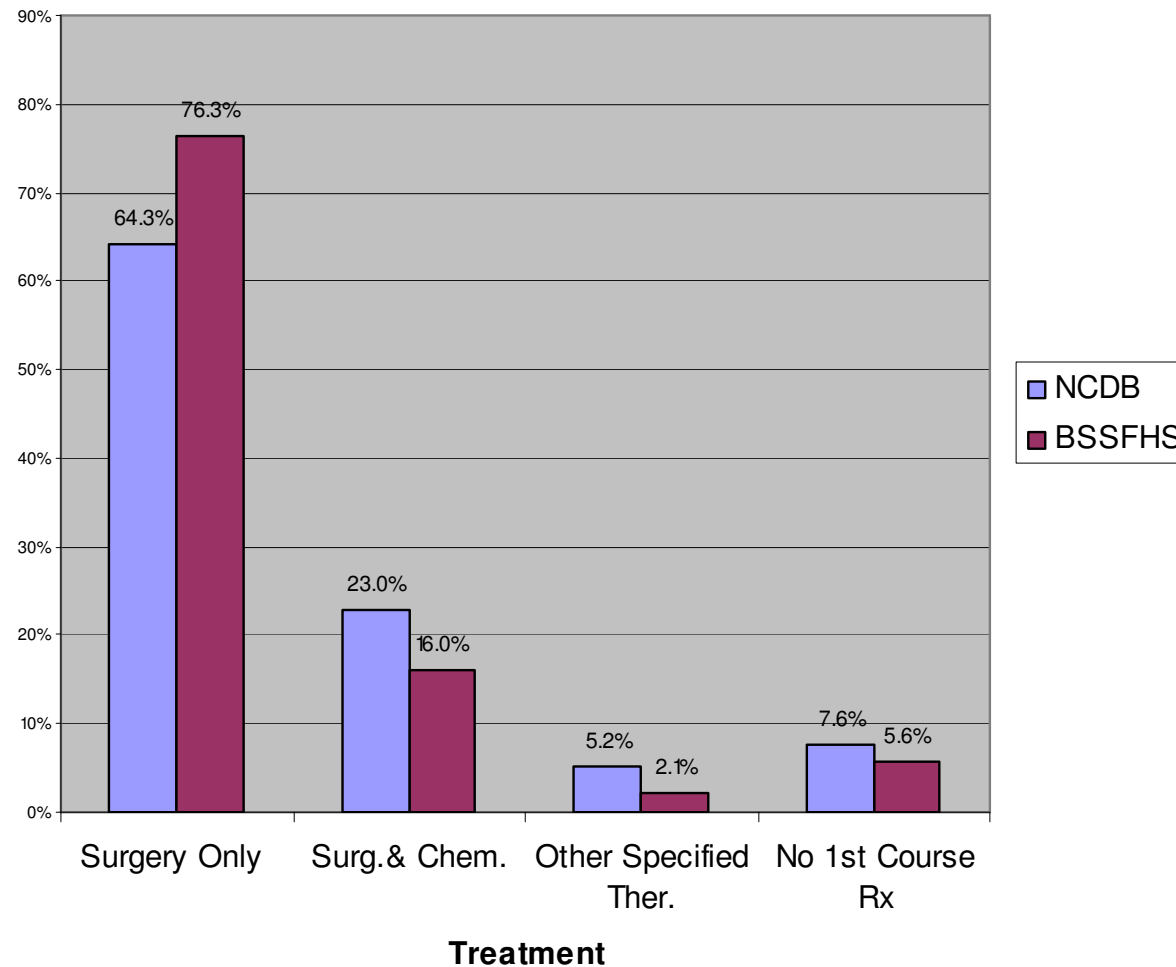
BSSFHS = (St. Francis)

NCDB = (National Center Data Base)

# Stage of Colon Cancer Diagnosed 2000-2004



# Treatment of Colon Cancer Diagnosed 2000-2005



BSSFHS = (St. Francis)

NCBD = (National Center Data Base)

# Colon Cancer Survival Statistics Comparison

